



Grassland Resilience and Conservation Initiative

NFWF CONTACTS

Todd Hogrefe

Regional Director,
Central Region
612-564-7286
todd.hogrefe@nfwf.org

Greg Pilchak

Program Director,
Central Region Working Lands
greg.pilchak@nfwf.org
202-938-0640

Nora Ong

Manager,
Central Region Working Lands
nora.ong@nfwf.org
202-595-2608

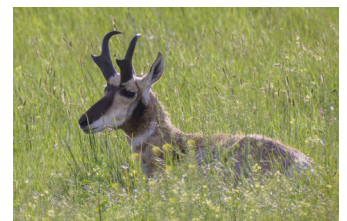
FUNDING PARTNERS

- McDonald's USA
- Cargill
- The Coca-Cola Company
- Golden State Foods
- Lopez Foods
- OSI Group
- USDA Natural Resources Conservation Service

ABOUT NFWF

The National Fish and Wildlife Foundation (NFWF) works with partners to foster sustainable and impactful conservation solutions so that people and nature thrive together. Chartered by Congress in 1984, NFWF has grown to become the nation's largest conservation foundation. Since its founding, NFWF has funded more than 23,900 projects that have generated a total conservation impact of \$12 billion.

Learn more at www.nfwf.org



Ranchers, beef cattle, western meadowlarks, mule deer, grasshopper sparrows and pronghorn share the grassland on this ranch in Montana.

OVERVIEW

In partnership with McDonald's USA, some of its key beef and beverage suppliers and the U.S. Department of Agriculture's Natural Resources Conservation Service (NRCS), the National Fish and Wildlife Foundation (NFWF) has launched a landmark conservation initiative to support large-scale, voluntary conservation and grazing management practices on grasslands across the United States.

Launched in 2025, the *Grassland Resilience and Conservation Initiative* aims to enhance wildlife habitat, conserve water resources and improve soil health. McDonald's USA supports the initiative as part of its aims to help strengthen the resilience of its U.S. beef supply chain, including economic benefits participating ranchers are expected to receive via incentive payments.

This initiative seeks to improve the health and resilience of 4 million acres of grasslands over seven years, with significant investments expected in the Great Plains, Rocky Mountain West, Midwest, West Coast and Southeast. As part of this initiative, NFWF will manage and invest conservation funding to advance ranchers in their voluntary conservation efforts. NFWF has already begun collaborating with its conservation partners across America's grasslands to identify impactful landscape-scale projects that will generate the greatest possible benefits to both wildlife populations and the productivity of vital U.S. ranch lands.

(continued)



Lark bunting



Ferruginous hawk chick



Swift foxes



America's ranchers steward of some of the nation's richest wildlife habitats. Without ranching, these crucial grassland habitats could be lost.



Horned toad



Blanket and alfalfa flowers



Grasshopper sparrow

On behalf of McDonald's USA, Cultivo and Carbon Yield will provide independent monitoring and quantification of any improvements to soil health.

Key strategies include:

- **Grazing Management:** Develop and implement grazing management plans that optimize stocking rates and livestock movements and incorporate virtual fencing and other grazing infrastructure, as appropriate, to promote plant growth above and below ground, improve wildlife habitat, and maximize soil function.
- **Grassland Restoration:** Restore grassland function and connectivity through reseeding native plants, controlling invasive vegetation in areas with new and low-density infestations of woody invasive species, and through removing and modifying fencing to facilitate wildlife migrations.
- **Protection and Restoration of Water Resources and Wildlife Habitat:** Restore riparian buffers and wet meadows (e.g., via streambank re-vegetation, water control structures, beaver mimicry) to improve hydrology, in-stream flows, aquifer recharge, water conservation, and flood and drought resilience. Implement voluntary, permanent conservation efforts that maintain working ranches and restrict sub-division and sod-busting activities (e.g., conservation easements, grass banking). Projects in areas at high risk of tillage, development or degradation will be more competitive.